



Co-funded by  
the European Union

# SEED4EU+ CALL 2025-2026

## Info session

08 September 2025



**Univerzita  
Karlova**



**UNIVERSITÄT  
HEIDELBERG**  
ZUKUNFT  
SEIT 1386



**PANTHÉON-ASSAS  
UNIVERSITÉ**  
PARIS



**SORBONNE  
UNIVERSITÉ**



**KØBENHAVNS  
UNIVERSITET**



**UNIVERSITÉ  
DE GENÈVE**



**UNIVERSITÀ  
DEGLI STUDI  
DI MILANO**







**UNIwersYTET  
WARSAWSKI**



Co-funded by  
the European Union

# The session will start at 16:00!

A few housekeeping rules:

-  Questions will also be taken at the **Q&A session**
-  Use the **“Raise Hand” or Chat** to ask questions.
-  Please **mute your microphone** and **turn off** your camera unless speaking.
-  Presentation & recording will be published on the 4EU+ website



Univerzita  
Karlova



UNIVERSITÄT  
HEIDELBERG  
ZUKUNFT  
SEIT 1386



PANTHÉON-ASSAS  
UNIVERSITÉ  
PARIS



SORBONNE  
UNIVERSITÉ



KØBENHAVNS  
UNIVERSITET



UNIVERSITÉ  
DE GENÈVE



UNIVERSITÀ  
DEGLI STUDI  
DI MILANO



UNIWERSYTET  
WARSZAWSKI

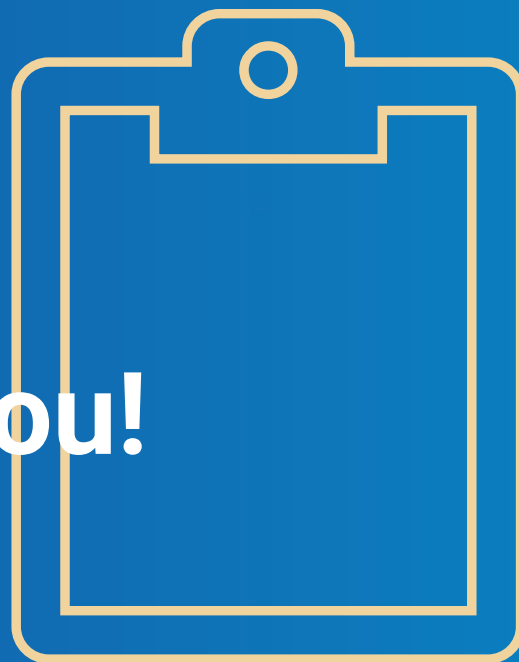
4eu+



Co-funded by  
the European Union

# But first.... Let us get to know you!

Please answer the Zoom survey



Univerzita  
Karlova



UNIVERSITÄT  
HEIDELBERG  
ZUKUNFT  
SEIT 1386



PANTHÉON-ASSAS  
UNIVERSITÉ  
PARIS



SORBONNE  
UNIVERSITÉ



KØBENHAVNS  
UNIVERSITET



UNIVERSITÉ  
DE GENÈVE



UNIVERSITÀ  
DEGLI STUDI  
DI MILANO



UNIWERSYTET  
WARSZAWSKI



Co-funded by  
the European Union

# Introducing 4EU+ Alliance



Univerzita  
Karlova



UNIVERSITÄT  
HEIDELBERG  
ZUKUNFT  
SEIT 1386



PANTHÉON-ASSAS  
UNIVERSITÉ  
PARIS



SORBONNE  
UNIVERSITÉ



KØBENHAVNS  
UNIVERSITET



UNIVERSITÉ  
DE GENÈVE



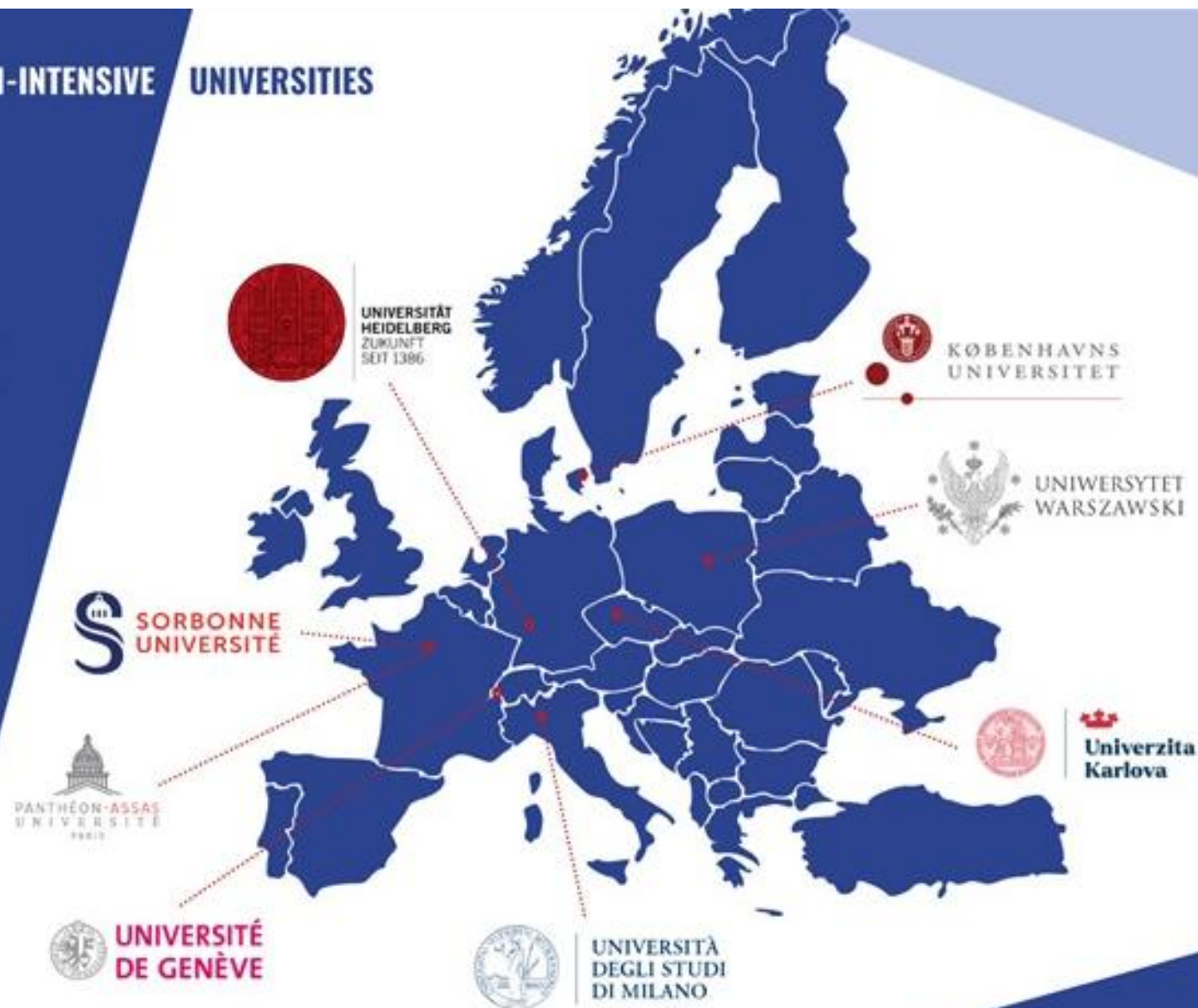
UNIVERSITÀ  
DEGLI STUDI  
DI MILANO



UNIwersYTET  
WARSAWSKI

8

## RESEARCH-INTENSIVE UNIVERSITIES



## 4 Flagship programmes



### Flagship 1

Urban Health and Demographic Change



### Flagship 2

Europeanness: multilingualism, pluralities,  
citizenship



### Flagship 3

Digitisation - Modelling - Transformation



### Flagship 4

Environmental transitions





## Strategy 2025-2035

*The 4EU+ Alliance's Strategy 2025-2035 charts the course towards building One Comprehensive Research-Intensive European University, outlining ambitions and actions across education, research, innovation, and outreach.*

[Read more](#)

Website: <https://4euplus.eu/4EU-1001.html>

- A framework for **expanding and deepening collaboration** within and across missions
- Accompanied by an **Action Plan**: a tool to **monitor** and **prioritize** both new initiatives and the resources already invested in current initiatives

# What is **NEW** in the 2025 Call?

Emphasis on  
research

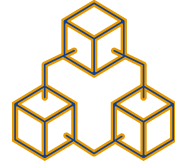
Opening to early  
career  
researchers



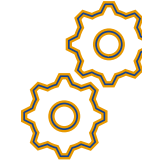
# WHAT IS SEED ABOUT?



Funding the implementation of novel ideas, starting points for possible long-term collaboration



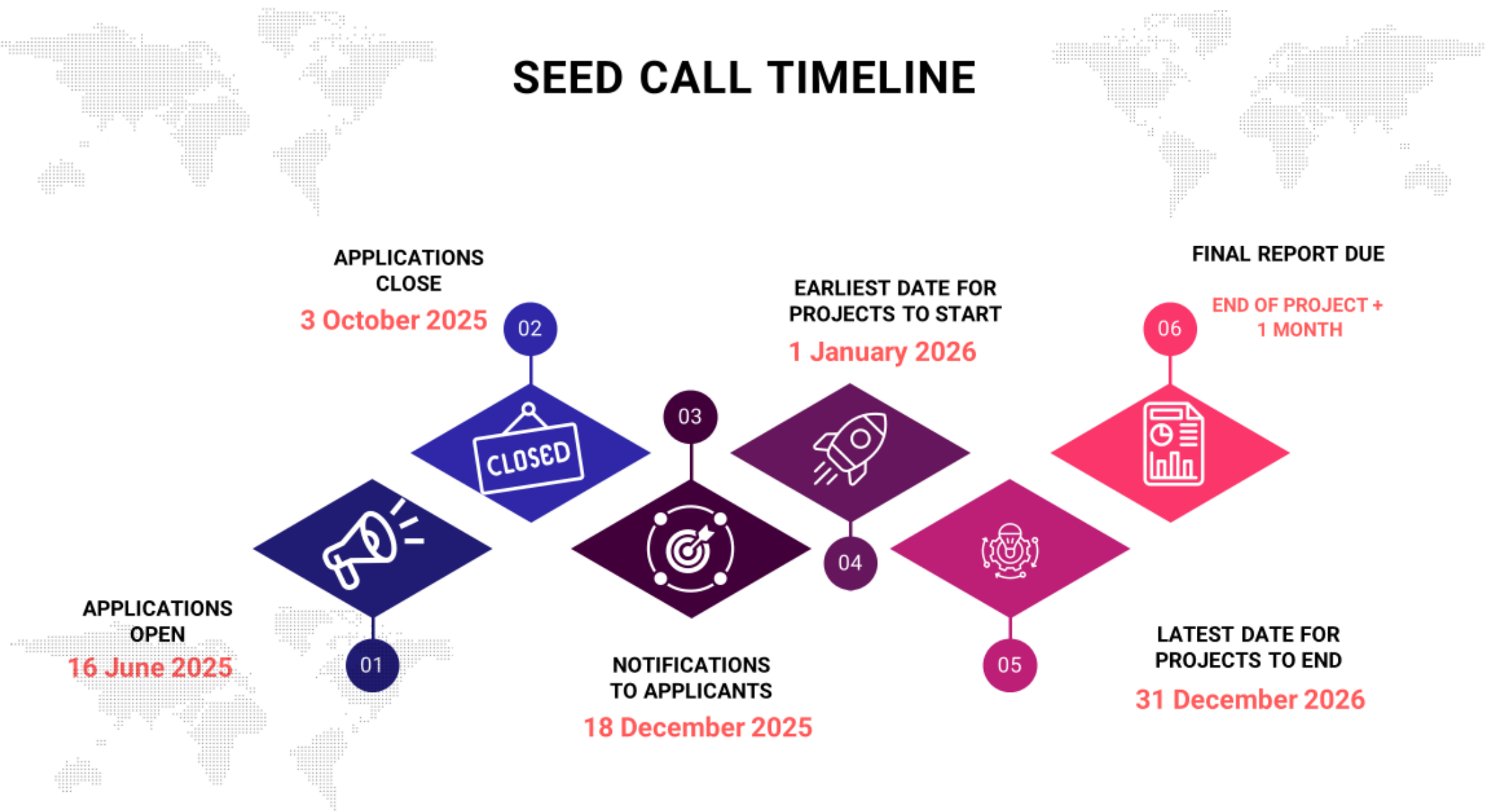
Fostering 4EU+ cooperation on initiatives with the aim of developing One Comprehensive Research-Intensive European University



Research (primary focus) and education

**Specific for SEED4EU+: Success rate around 35% and easy project application**

# SEED CALL TIMELINE



## APPLICATION REQUIREMENTS:

What to  
remember?



- ✓ At least **THREE 4EU+ partner universities** (ex. University of Warsaw PI with Milan and Heidelberg)
- ✓ **PhD title**
- ✓ **Employment contract (valid until the end of the project period) for the Applicants (PI) and Local Project Coordinators**
- ✓ **Duration of the project: max. 12 months (01/01/2026 - 31/12/2026)**
- ✓ **Budget** allocated among **all** the partners
- ✓ **Letter of intent:** Each local coordinator provides a letter of intent signed by the head of the faculty/department/institution

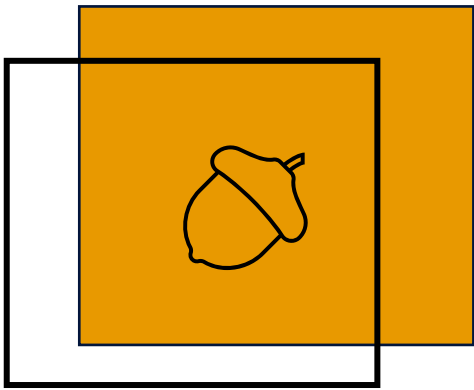
# Questions



- Can someone be both the PI and the local coordinator for a project? Or do these need to be separate people?
- I am employed at the partner university UW (part-time researcher position - assistant professor) - however my full-time employment is at another Polish university. Can I be a PI of the proposal?
- Can temporary researchers submit a project application?
- According to your experience, what is the "reasonable" size of each team?
- Is it possible to be part of the team in more than one project application?

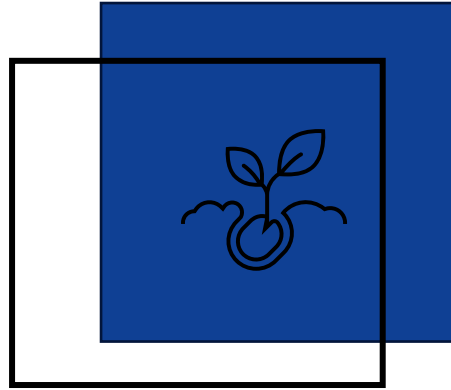
# WHAT IS EVALUATED?

Max score: 100



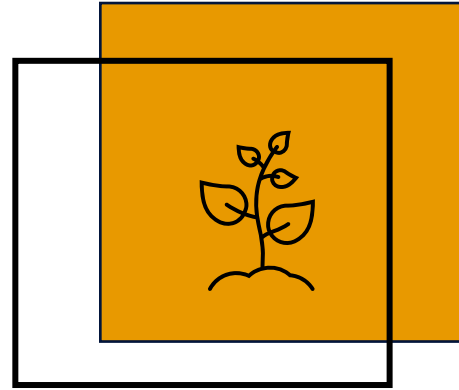
## Objectives & Methodology (0-25)

- ✓ Relevance for 4EU+ Strategy



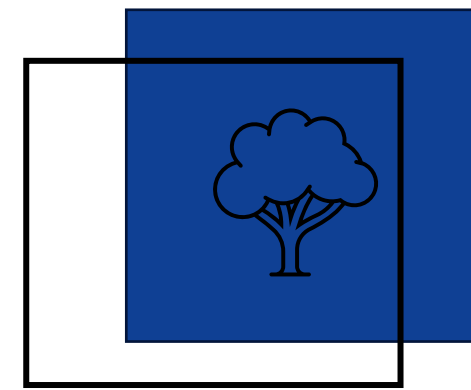
## Novelty (0-25)

- ✓ Ambitious and innovative
- ✓ Add steps to previously funded project



## Implementation (0-25)

- ✓ Role of each partner
- ✓ Expertise brought by the consortium



## Expected results & Sustainability (0-25)

- ✓ Project value for the Alliance
- ✓ Scaling up the collaboration and results beyond the project's scope

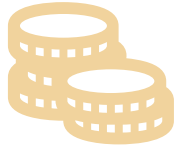
# Questions



- Is it a good idea to mention that the project will be carried out both with the SEED4EU+ partners in the project as well as other European institutions (that won't be funded because not part of the Alliance but still...)
- How detailed should the project timeline be? Should it be broken down month by month, or is a more general overview sufficient?  
How should we interpret the section “Synergies with Previous 4EU Initiatives”? If we have previously co-organised an academic seminar with one of the 4EU+ universities participating in the SEED4EU+ project – but this was not part of a 4EU+ initiative (project) - should we still answer “yes” to this question?
- How long must the written project be?
- The programme focuses exclusively on teaching involving students or purely scientific research projects are also eligible for funding?
- What do you mean with Sustainability and Relevance in the evaluation criteria?

# BUDGET

## Useful recommendations :



The maximum funding available **per project is € 50.000**. To build the budget for your project, it is recommended to define your activities precisely, as it is a **constructed** budget, meaning **each university involved in the project contributes its own funding to the project**.



We highly recommend contacting the **4EU+ local office** at your university for any budget questions or concerns during the project building process, **both as a Coordinator and a partner (at least two weeks before the submission, preferably earlier)**.



The expected **EARLIEST** date for projects to start is **1st January 2026**, and the funding must be used **within that year**.



Activity/Cost	
Travel and subsistence expenses: airfare (economy class), train, car rental, lodging, meals, visas, or similar	eligible
Costs of hosting seminars/conferences or workshops (e.g., venue rental, catering, lodging)	eligible
Consumables and supplies as proportionate with activities	eligible
Publications (related to collaborative research) costs, including Open Access fees	eligible
Hiring student assistants	eligible/not eligible*
Internship stipends	eligible/not eligible*
Salaries for support teams (scientific, administrative)	eligible/not eligible*
Internal invoicing for access to research infrastructures	eligible/not eligible*
Subcontracting	eligible/not eligible*
Scientific equipment	eligible/not eligible*
Stipend payments to non 4EU+ member institutions individuals	not eligible
Fellowships, scholarships for theses	not eligible
Website development	not eligible
Entertainment costs	not eligible
Office supply and furniture	not eligible
Indirect costs	not eligible



**The \* sign in the eligibility costs means that Applicants should contact their 4EU+ local office to check if they are eligible for these types of costs.**

Activity/Cost	
Travel and subsistence expenses: airfare (economy class), train, car rental, lodging, meals, visas, or similar	eligible
Costs of hosting seminars/conferences or workshops (e.g., venue rental, catering, lodging)	eligible
Consumables and supplies as proportionate with activities	eligible
Publications (related to collaborative research) costs, including Open Access fees	eligible
<b>Hiring student assistants</b>	<b>eligible/not eligible*</b>
<b>Internship stipends</b>	<b>eligible/not eligible*</b>
<b>Salaries for support teams (scientific, administrative)</b>	<b>eligible/not eligible*</b>
<b>Internal invoicing for access to research infrastructures</b>	<b>eligible/not eligible*</b>
<b>Subcontracting</b>	<b>eligible/not eligible*</b>
<b>Scientific equipment</b>	<b>eligible/not eligible*</b>
Stipend payments to non 4EU+ member institutions individuals	not eligible
Fellowships, scholarships for theses	not eligible
Website development	not eligible
Entertainment costs	not eligible
Office supply and furniture	not eligible
Indirect costs	not eligible



The \* sign in the eligibility costs means that applicants should [contact their 4EU+ local office](#) to check if they are eligible or not.

# Questions



- Does all the money have to be spent in 2026?
- Are universities required to contribute internal funding in addition to the allocated amount?
- Could you please clarify how the financial management works? Does the full amount go first to the coordinating university, which then distributes funds to the partners according to the agreed budget? Or is each partner directly allocated their share of the funding by the 4EU+?
- Could you please clarify whether coordination costs (for PIs and coordinators) and the work of doctoral students can also be included in the budget?

—

—

# Are you looking for project partners?

 Use these tools:



Fill in the **form** and let your 4EU+ colleagues know what your work is about.

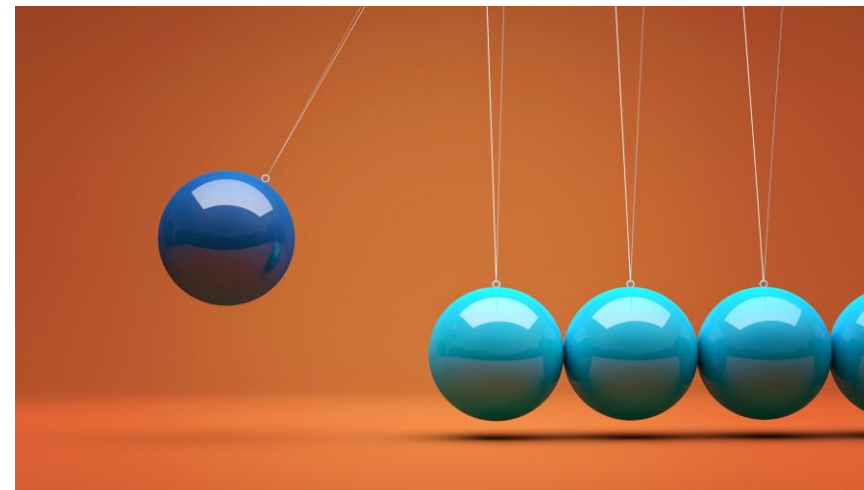


Have **a look** at the SEED collaboration opportunities already shared through the form.



Are you looking for  
inspiration?  
Check the past projects

👉 <https://4euplus.eu/seed>



<div data-bbox="341 929 545 1019">4eu+</div> <div data-bbox="346 1048 519 1105">SEED</div> <div data-bbox="326 1133 540 1169"><u>2024 - 2025</u></div> <div data-bbox="270 1279 593 1312">2024 SEED4EU+ Projects</div>	<div data-bbox="960 929 1164 1019">4eu+</div> <div data-bbox="965 1048 1138 1105">SEED</div> <div data-bbox="945 1133 1159 1169"><u>2023 - 2024</u></div> <div data-bbox="891 1279 1212 1312">2023 SEED4EU+ Projects</div>
--	--

## Please get in touch with your 4EU+ Local Office for any questions

 <https://4euplus.eu/contacts>

Charles University: [4euplus@cuni.cz](mailto:4euplus@cuni.cz)

Heidelberg University: [4euplus@rektorat.uni-heidelberg.de](mailto:4euplus@rektorat.uni-heidelberg.de)

Paris-Panthéon-Assas University: [4euplus@assas-universite.fr](mailto:4euplus@assas-universite.fr)

Sorbonne University: [4euplus-su@sorbonne-universite.fr](mailto:4euplus-su@sorbonne-universite.fr)

University of Milan: [4euplus@unimi.it](mailto:4euplus@unimi.it)

University of Copenhagen: [4euplusucph@adm.ku.dk](mailto:4euplusucph@adm.ku.dk)

University of Geneva: [4euplus@unige.ch](mailto:4euplus@unige.ch)

University of Warsaw: [4euplus@uw.edu.pl](mailto:4euplus@uw.edu.pl)



# Supporting your communication & dissemination activities

## 👉 4EU+ Communication Officers



**Katarzyna (Kasia)  
Ścierańska**  
katarzyna.scieranska  
@adm.uw.edu.pl



**Kristýna Kolínová**  
kristyna.kolinova@ruk.cuni.cz



**Marta Brelih-Wąsowska**  
marta.brelih-wasowska  
@adm.uw.edu.pl

+ local Communications  
Officers (members of  
4EU+ Communications  
Working Group)





Co-funded by  
the European Union

# SEED4EU+ story: NODE

---

The book is the result of research conducted as part of the SEED4EU+ project “Naming for Othering in a Diversified Europe” (NODE, 2023–2025, project leader: Marta Falkowska), a joint initiative of the University of Warsaw, Charles University in Prague, and Heidelberg University.  
<https://brill.com/display/title/72838>

## THE LANGUAGE OF OTHERING IN A DIVERSE EUROPE

EDITED BY

MARTA FALKOWSKA AND JADWIGA LINDE-USIEKNIEWICZ

BRILL'S STUDIES IN LANGUAGE, COGNITION AND CULTURE

BRILL



Co-funded by  
the European Union

# SEED4EU+ story: CREST

---

**Testimonial by Lukáš Brodský**  
CREST Project Leader  
Charles University



Univerzita  
Karlova



UNIVERSITÄT  
HEIDELBERG  
ZUKUNFT  
SEIT 1386



KØBENHAVNS  
UNIVERSITET



UNIVERSITÉ  
DE GENÈVE



UNIVERSITÀ  
DEGLI STUDI  
DI MILANO



UNIWERSYTET  
WARSZAWSKI



# QUESTIONS & ANSWERS

# USEFUL REFERENCES

<b>4EU+ Strategy: 2025-2035</b>	<a href="https://4euplus.eu/4EU-470.html?">https://4euplus.eu/4EU-470.html?</a>
<b>About 4EU+ Flagships</b>	<a href="https://4euplus.eu/flagships">https://4euplus.eu/flagships</a> <a href="https://4euplus.eu/4EU-890.html">https://4euplus.eu/4EU-890.html</a>
<b>4EU+ Teaching &amp; Learning Toolbox</b>	<a href="https://4euplus.eu/4EU-971.html?test=1&amp;">https://4euplus.eu/4EU-971.html?test=1&amp;</a>
<b>Grant Support Service (GSS)</b>	<a href="https://4euplus.eu/grants">https://4euplus.eu/grants</a>
<b>4EU+ MICI</b>	<a href="https://4euplus.eu/4EU-1124.html?">https://4euplus.eu/4EU-1124.html?</a>

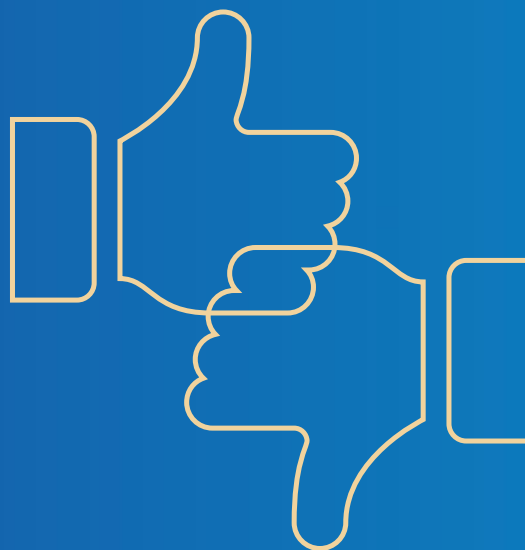
4eu+



Co-funded by  
the European Union

# How did we do?

Please answer the Zoom survey



Univerzita  
Karlova



UNIVERSITÄT  
HEIDELBERG  
ZUKUNFT  
SEIT 1386



PANTHÉON-ASSAS  
UNIVERSITÉ  
PARIS



SORBONNE  
UNIVERSITÉ



KØBENHAVNS  
UNIVERSITET



UNIVERSITÉ  
DE GENÈVE



UNIVERSITÀ  
DEGLI STUDI  
DI MILANO



UNIWERSYTET  
WARSZAWSKI

Remember the  
Call closes on  
**3 October 2025!**







**Fertile ground** is  
ready - time to **plant**  
your ideas!

**SEED 2025 CALL**

#GrowingTogether  
#GrowingInCreativity

# Thank you!

 <https://4euplus.eu/seed>